



Outdoor attention-grabbing
neon LED light strip

Part#: 223004 (Top Bend-Standard) • 233104 (Side Bend-Standard) • 233107 (Side Bend-RGB)

Job Information <small>Fill out project details for this product below</small>			
Project		Location	
Contact		Date	
Product Number		Fixture Type	

Multiple color options, a modern, energy-efficient way to achieve LED neon attention-grabbing look for external applications. Great for landscaping, boat/marine lighting, cabinet lighting, and other indoor or outdoor applications.



KEY FEATURES



**Multiple
Variants**



**IP65
Rating**

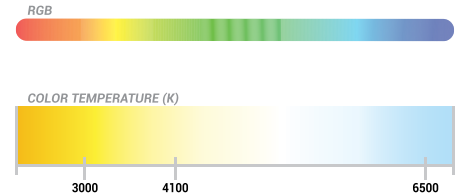


**Fully
Flexible**

APPLICATIONS

- Shelves
- Cove Lighting
- Corner Lighting
- Displays

LIGHT TEMPERATURE



OVERVIEW

TOP BEND OPTION



SIDE BEND OPTION





Outdoor attention-grabbing
neon LED light strip

SPECIFICATIONS

PHYSICAL SPECIFICATIONS

Part Number	223004 (Top Bend-Standard) • 233104 (Side Bend-Standard) • 233107 (Side Bend-RGB)
Series	223004-XXX-24-2.7-XA • 233104-XXX-24-2.7-XC • 233107-XXX-24-4.3-XF
Chip	Legacy
Beam Angle	Top Bend - 180° • Side Bend - 160°
CRI	≥ 80
Color Temperature	3000 K • 4100 K • 6500 K • RGB
Lumens	White - top bend - 165 lm/ft • White - side bend - 123 lm/ft • RGB-side bend - 170 lm/ft
Operating Temperature	-20 °C (-4 °F) ~ +45 °C (+113 °F)
Environment	IP65 (Outdoor)
Diode pitch	8 mm (Standard) • 10 mm (RGB)
Cutable Length	2" (50.8mm)
Dimensions	Top Bend - 0.62" x 0.6" • Side Bend - 0.4" x 0.8"
Maximum Run - Class 2	Standard - 2.73 W/ft - 16 ft • RGB - 4.24 W/ft - 16 ft

ELECTRICAL SPECIFICATIONS

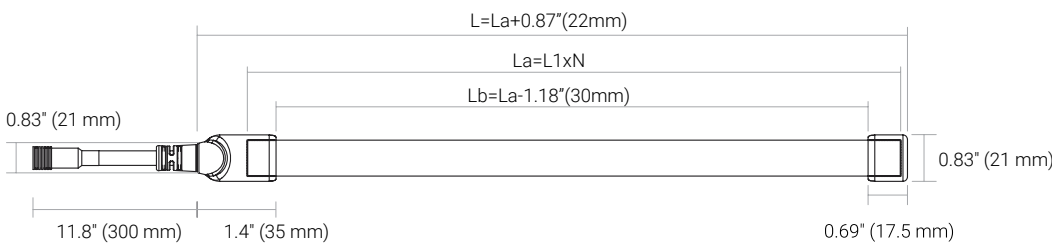
Input Voltage	24V DC
Power Consumption	Standard - 2.73 W/ft (4.24 W/ft & 1.22 W/ft on request) • RGB - 4.24 W/ft
Wire Size	16 AWG
Connector	Waterproof cable with plug & play connector
Certification	UL listed (E346146)



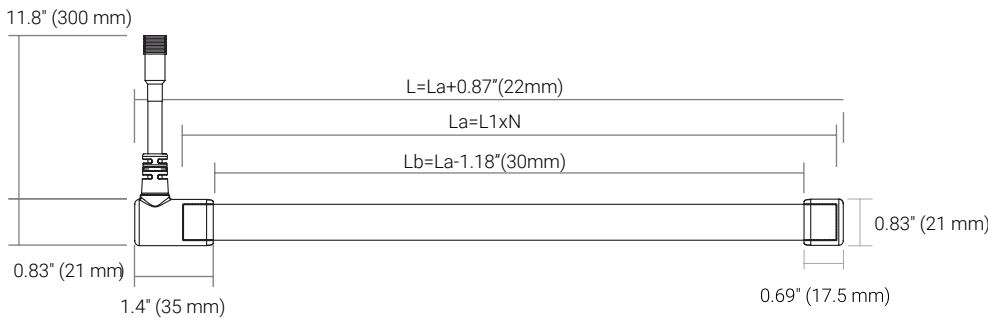
Outdoor attention-grabbing
neon LED light strip

OVERVIEW

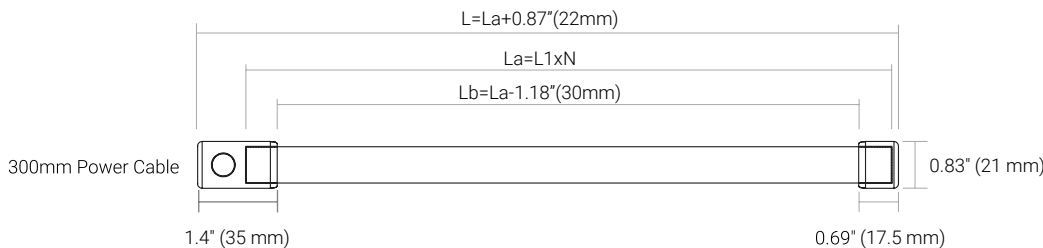
TOP BEND OPTION



POWER END FEED



POWER SIDE FEED



POWER REAR FEED

LEGEND

L = total length of illumination

L1 = cuttable length

Lb = total length of Neon strip including end caps

Lc = total length of neon strip including end caps and connection

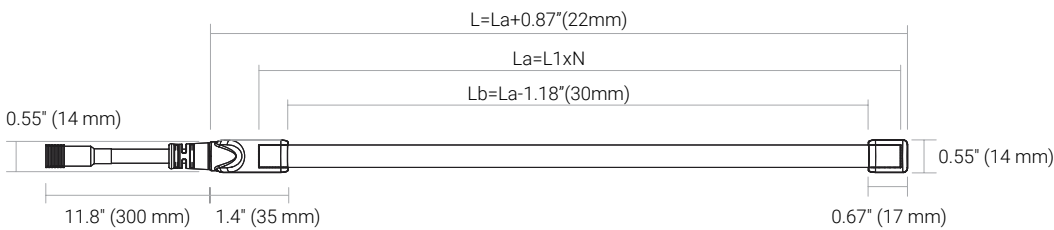
N = number of total segments



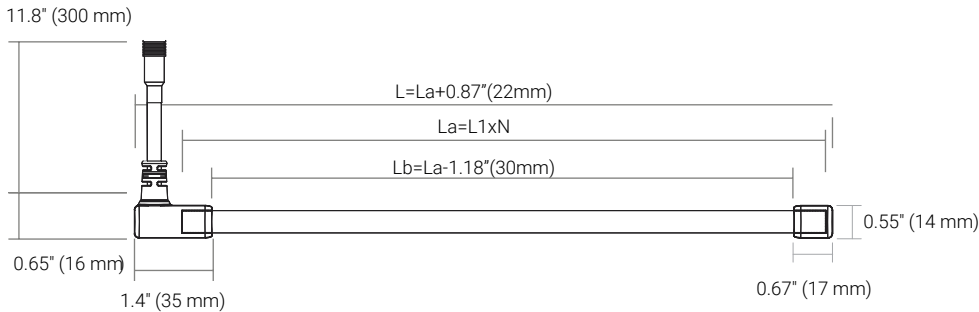
Outdoor attention-grabbing
neon LED light strip

OVERVIEW

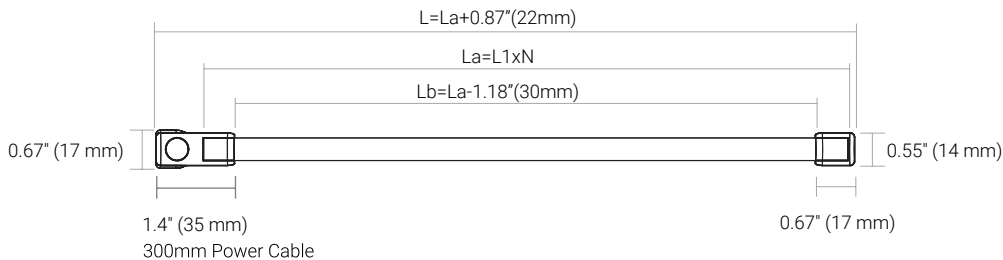
SIDE BEND OPTION



POWER END FEED



POWER SIDE FEED



POWER REAR FEED

LEGEND

L = total length of illumination

L1 = cuttable length

Lb = total length of Neon strip including end caps

Lc = total length of neon strip including end caps and connection

N = number of total segments

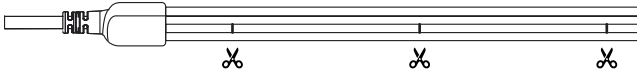


Outdoor attention-grabbing
neon LED light strip

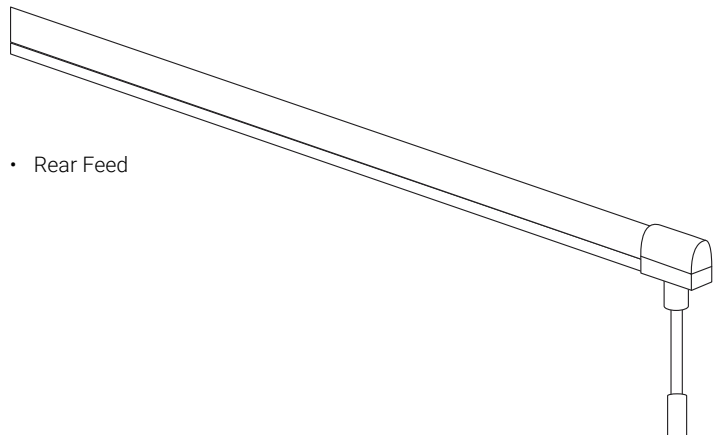
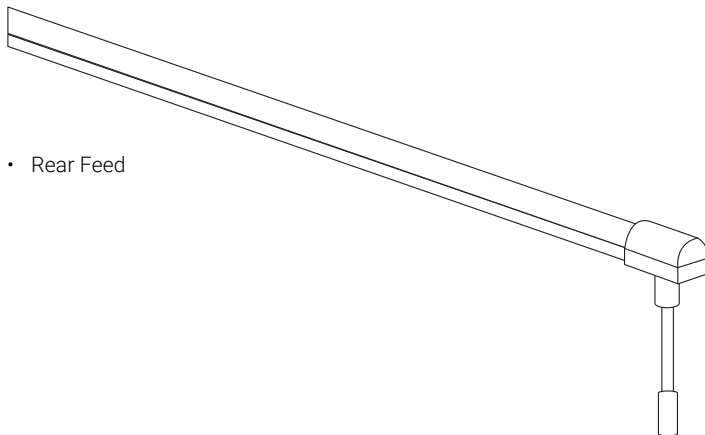
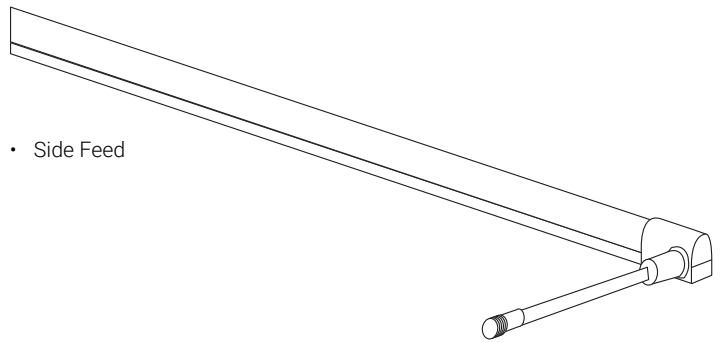
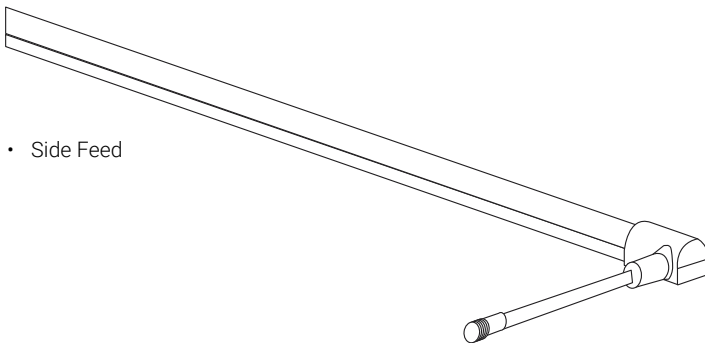
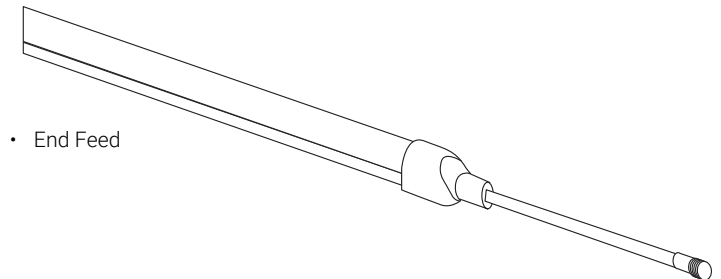
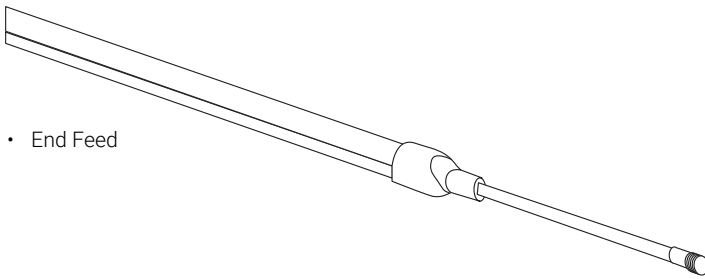
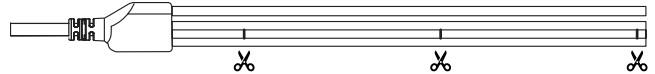
MOUNTING OPTIONS

TOP BEND OPTION

- Visible transparent window for cutting mark defined



SIDE BEND OPTION



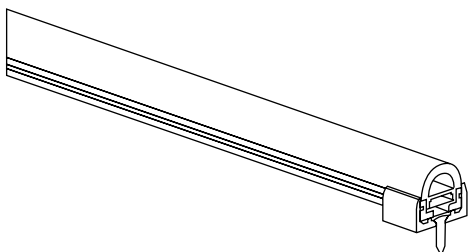


Outdoor attention-grabbing
neon LED light strip

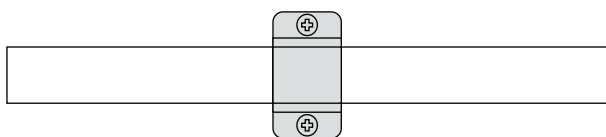
MOUNTING OPTIONS

TOP BEND OPTION

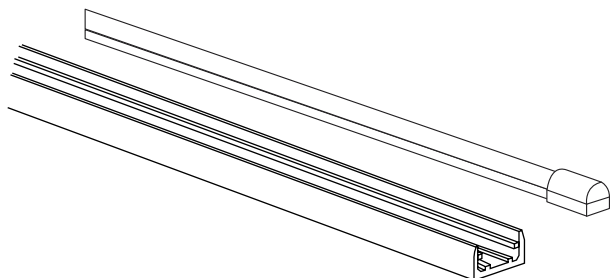
- Brackets



- Clip

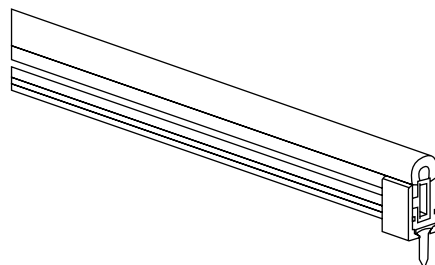


- Aluminum Channel

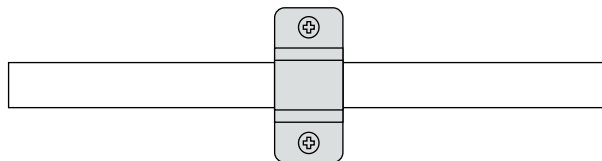


SIDE BEND OPTION

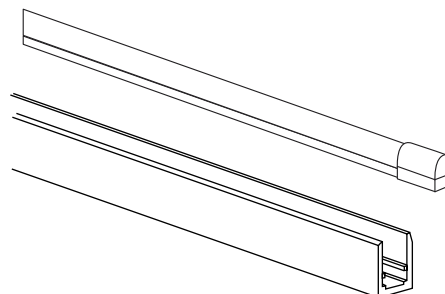
- Brackets



- Clip



- Aluminum Channel

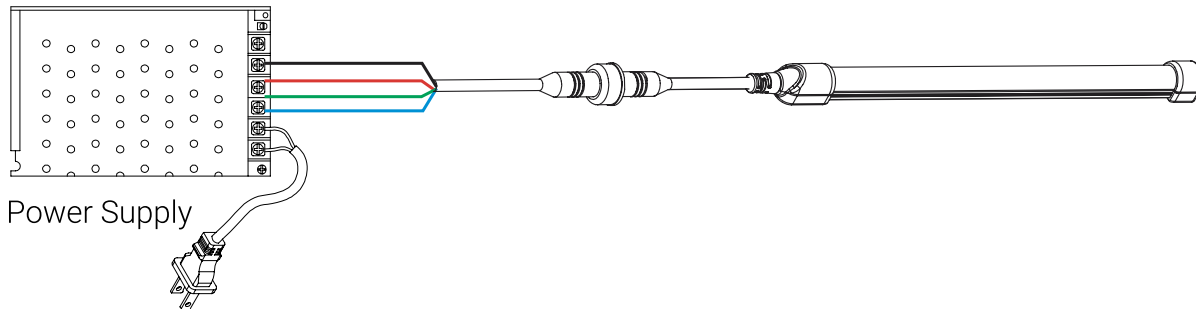




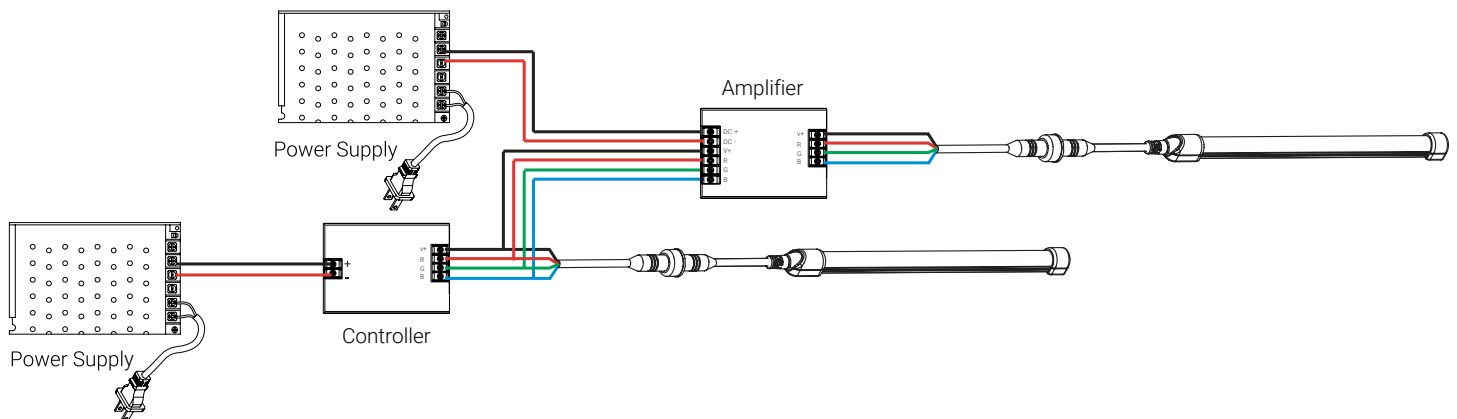
Outdoor attention-grabbing
neon LED light strip

WIRING

NON-DIMMABLE



DIMMABLE





Outdoor attention-grabbing
neon LED light strip

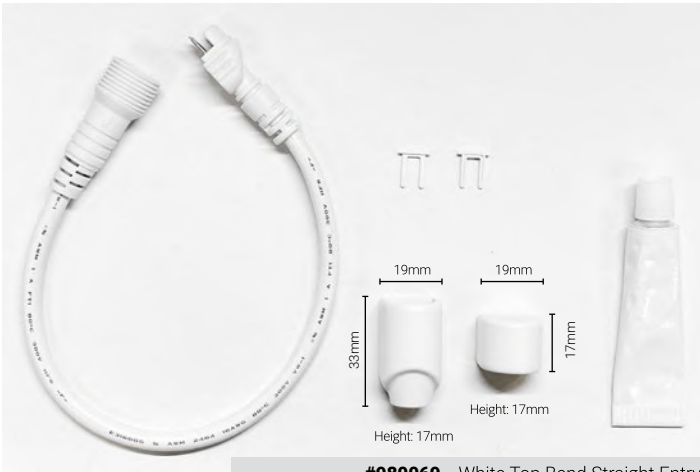
ACCESSORIES



#980078 - White Light Connector Top/Side Bend



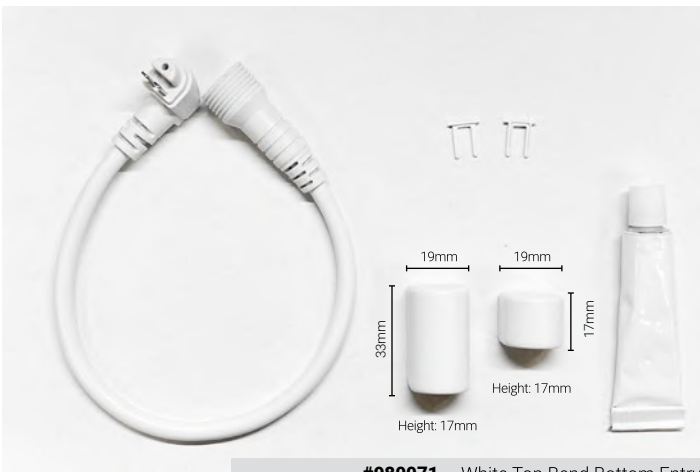
#980079 - RGB Light Connector Side Bend



#980069 - White Top Bend Straight Entry



#980070 - White Top Bend Side Entry



#980071 - White Top Bend Bottom Entry



#980072 - White Side Bend Straight Entry

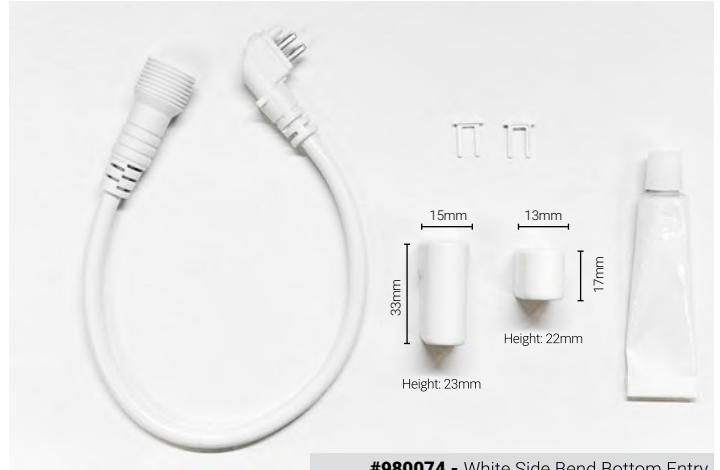


Outdoor attention-grabbing
neon LED light strip

ACCESSORIES



#980073 - White Side Bend Side Entry



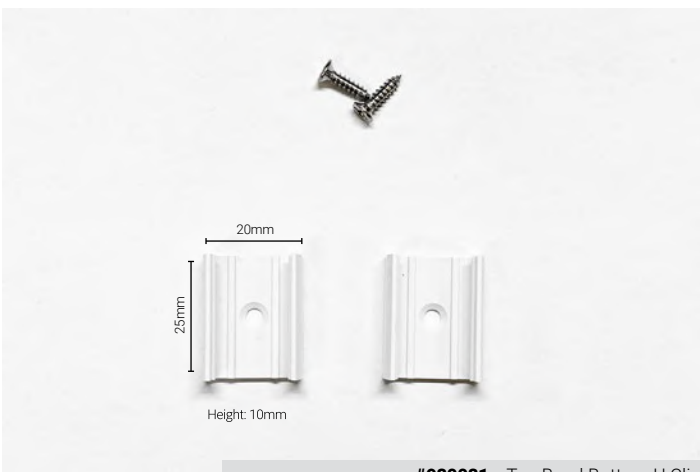
#980074 - White Side Bend Bottom Entry



#980076 - RGB Side Bend Side Entry



#980077 - RGB Side Bend Bottom Entry



#980081 - Top Bend Bottom U Clip



#980083 - Side Bend Bottom U Clip



Outdoor attention-grabbing
neon LED light strip

ACCESSORIES



#98082 - Side Bend Top U Clip



#980085 - 38" long aluminium channel with two mounting screws



Outdoor attention-grabbing
neon LED light strip

ACCESSORIES AND OPTIONS

POWER ADAPTORS OPTIONS

Plug-in (Class 2)

950021	24V	24W
950024	24V	90W
950035	24V	96W
950036	24V	60W

Hardwire

951012	24V	60W
950037	24V	60W
950038	24V	96W
950039	24V	150W

5 in 1 Dimming Driver

951004-24-096	24V	96W
951006-24-192	24V	2x96W

LED Power Driver (Class 2)

950003-12-060	12V	60W
---------------	-----	-----

* Other power options available on request

CONTROLLER OPTIONS

RGBW DMX

12V/24V x3CH

970032	24V	Max. 96W
970033	24V	Max. 96W

Power Repeater

970037	12-36V
--------	--------

DMX Wall Controller

970042	RGBW	12-24VDC
--------	------	----------

RGBW Dimmable Driver

970035	RF RGBW Dimmable Driver	24VDC
970036	RF RGBW Remote Control	

* Other controller options available on request

POWER FEED

Top Bend

980069	End Feed
980070	Side Feed
980071	Rear Feed

Side Bend

980072	End Feed
980073	Side Feed
980074	Rear Feed

WIRING OPTIONS

Option 1	EX-10 Cable
Option 2	PS-2 Cable
Option 3	PS-4 Cable
Option 4	PS-6 Cable

MOUNTING OPTIONS

Option 1	Bracket
Option 2	Clip
Option 3	Aluminum Channel
Option 4	Winged Aluminum Channel + Metal Clip
Option 5	Bendable Bracket



Outdoor attention-grabbing
neon LED light strip

ORDER INFORMATION

LMS Series

Product #	Size	Color Temperature		Voltage	Wattage
223004 Top-Bend-Standard		300-3000 K			
233104 Side-Bend-Standard	z-y: Custom Size	410-4100 K	900 RGB	24-24V DC	2.73 2.73 W/ft (Standard) 4.24 4.24 W/ft (RGB)
233107 Side-Bend-RGB		650-6500 K			
Power Feed	Wiring	Mounting	-	-	-
980069 Top Bend End Feed		1: Bracket			
980070 Top Bend Side Feed	1: Ex-10 cable	2: Clip			
980071 Top Bend Rear Feed	2: PS-2 cable	3: Aluminum Channel			
980072 Side Bend End Feed	3: PS-4 cable	4: Winged Aluminum Channel + Metal Clip			
980073 Side Bend Side Feed	4: PS-6 cable	5: Bendable Bracket			
980074 Side Bend Rear Feed					

EXAMPLE

223004-11-410-24-2.73-980069-1-1

The specification number immediately above can be deconstructed as follows:

- Neon Strip Top Bend; Dimensions(CL)-11"; Color Temperature-4100K; Voltag-24V; Wattage-2.73W/ft; Top Bend End Feed(980069); Ex-10 cable (1); Bracket (1)