

Project		Location	
Contact		Date	
Part#		Fixture	

OmniDecor™

Decorative Light Panel Fixture

┌
┐

Light
Guided
Panel

└
┘



Description

OmniDecor™ sets a new standard in sophisticated lighting solutions, offering a distinctive twist on the traditional with 3D patterns for eye-catching light panels. Use our precisely crafted, pre-made patterns or create custom designs personalized just for your space. Our panels redefine elegance and ambiance.

Applications

- Wall Decorations
- Ceiling Decorations
- Ambient Lighting
- Retail Storefronts



5 YEAR
WARRANTY



OmniClip



LM80



IP22



UL
LISTED



Manufactured in
North America



Backlit Graphic
Options



Wide Range of
Color Temperatures



Various LED
Locations

Key Features

- Custom diffuser shapes & designs available,
- Easily mount with Z-Clips
- Up to 4,000 lumens * of average surface brightness
- Color Rendering Index of 95+
- Wide range of color temperatures available,
- Patented V-Cut surface provides unparalleled, uniform light distribution

* Measurements done using 4' x 4' 4-side lit panel configuration

Create your OmniDecor™

1 Choose Your Size & Color

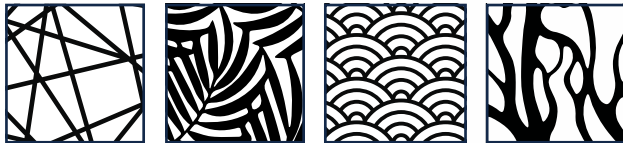
Aluminum Metal Frame



Black White Silver

2 Choose Your Pattern

3D Pattern Layer



Basic Nature Inspired Modern Elegant

Polycarbonate Diffuser (1.5 mm)

Patented OmniSheet™ Light Engine



Customize (Optional)

Submit a design that is ideal for your space

* Maximum size: 4' x 8'

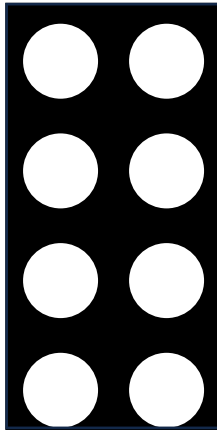
Custom patterns will require manufacturing approval.

Minimum size for each element is 1"

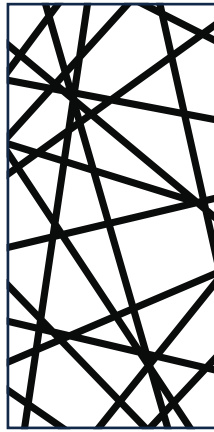
Curated Patterns

Basic

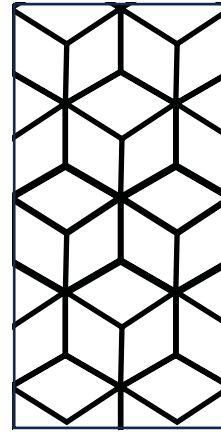
B1



B2

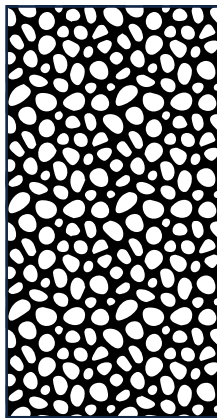


B3



Nature Inspired

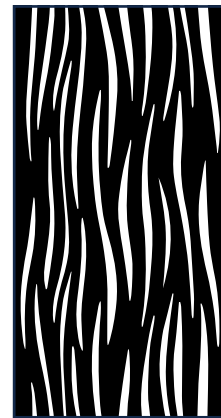
N1



N2

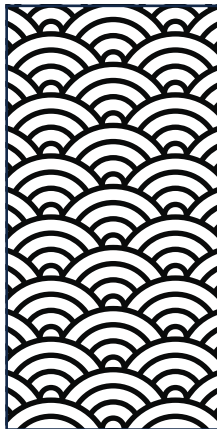


N3

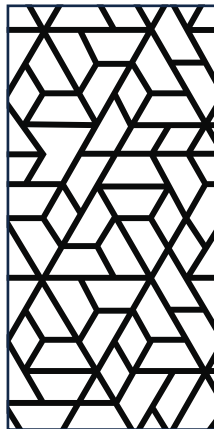


Modern

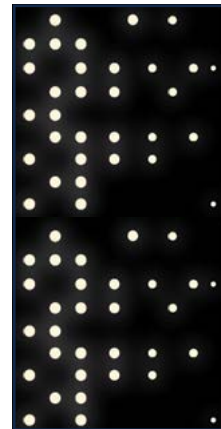
M1



M2

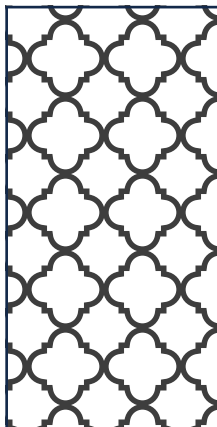


M3



Elegant

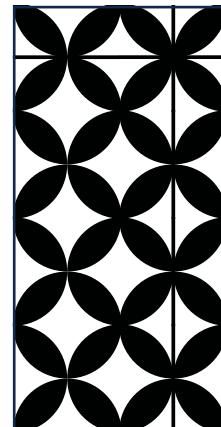
E1



E2



E3



Specifications

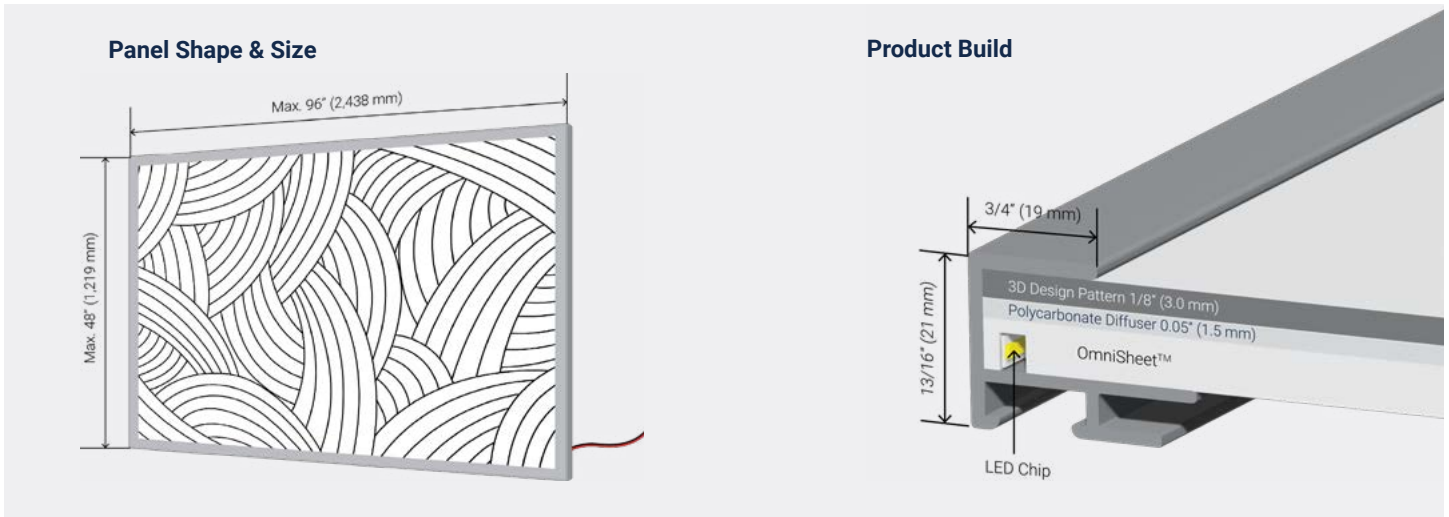
Performance		OmniDecor™
Part Number		#831901
CRI		≥90
Color Temperature		Static White (2700K, 3000K, 3500K, 4100K, 5300K, 6500K)
Lumens *		≥ 924 lm
Efficacy **		85-90 lm/W
Lumen Maintenance		L70 at ~ 70,000 h
Light Engine		OmniSheet™
Illumination		Single Face Illumination (SFI)
Operating Temp.		-30 °C (-22 °F) ~ +40 °C (+104 °F)
IP Rating		IP22
Fire Rating		UL94V-0
Environment		Dry/Damp location, Indoor use only
UL / ETL		UL listed (E346146) UL sign (E334549)
Warranty		5 Years
Mechanical		
Thickness		21 mm (13/16")
Maximum Size		48" x 96" 48" x 48" on Ceilings 1219 mm x 2438 mm 1219 mm x 1219 mm on Ceilings
Minimum Size		6" x 6" 152 mm x 152 mm
Weight		3.2 lb /sqft (1.5 km /sqm)
Frame		Black White Silver
3D Pattern		Choose from multiple styles (Basic, Nature Inspired, Modern, Elegant) and custom patterns available on request
Mounting Options		Z-Clips/Bars, EURO Hangers
Electrical		
Input Voltage		12V–24V DC
Power Consumption		Static White Low 2.4W /ft Static White Standard 4.4W /ft
Wire size		20 AWG, 2 wire
Wiring Options		Each panel must have direct connection to a Power Supply. Do not wire Panels in Series! Maximum wire length 20 ft (6 m) to avoid voltage drop.
Connector Options		Standard 5' (1.5 m) or custom length wire with Bare Leads Optional Type A 5.5 / 2.1 mm DC Jack available

* Measurements done using 2' x 2' 2-side lit panel configuration

** Efficacy Based on Light Engine

Customization

Panel Customization Options



Mounting Options

Option 1: Z-Clips

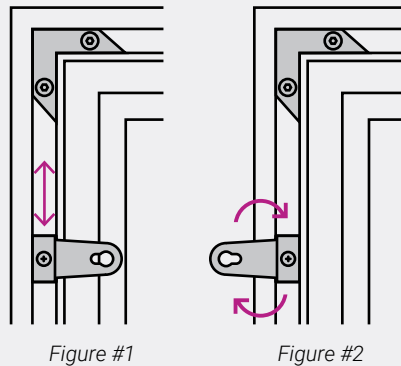
1. Place the supplied Slat-Wall mounting hangers on frame back screw tighten securely
2. Make Drill Hole on wall for screw locations and make the screw holds
3. Place Slat-Wall mounting base on wall and screw thigh
4. Hold frame in position close to the wall and slide from top to bottom into the trace



Option 2: Euro Hanger

Single-sided OmniDecor™ is provided with four mounting clips with keyhole slot on back along with pre-drilled hole(s) for securing the frame to the wall.

You can relocate (Figure #1) or turn the mounting clip 180 degrees (Figure #2) by loosening the screw. Make sure the screw on the clip is tightened after relocation before you install the light box.

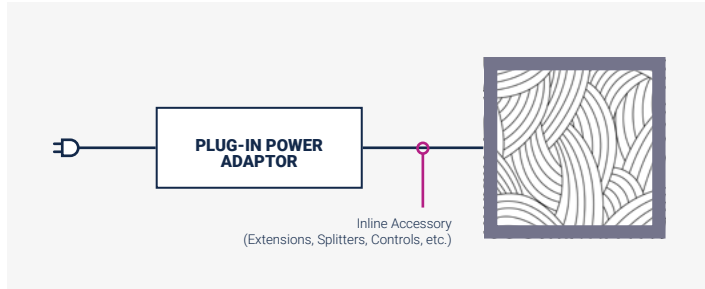


Customization

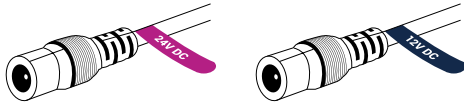
Wiring Options

Determine your system components, including a power adaptor, as well as optional dimmer and controller. Use only UL certified power adaptors with the power output that coordinates with your input voltage.

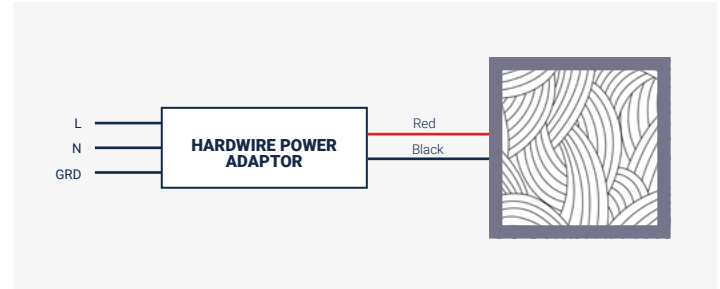
Using a Plug-in Power Adaptor



Use a plug-in adaptor to connect the Light Guided Panel to your power source via DC Jack.

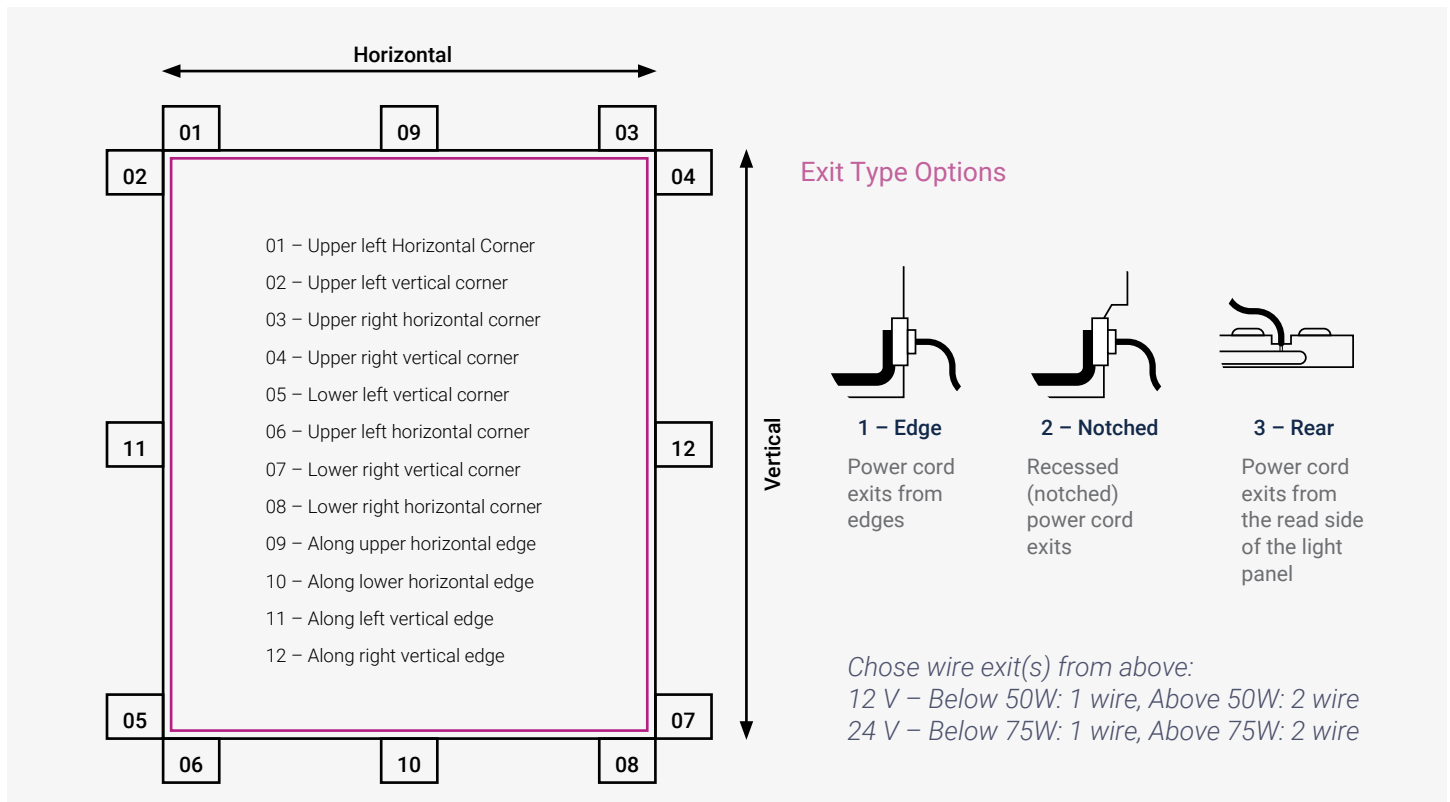


Wiring with Hardwire Power Adaptors



1. Turn off power to your system at the main breaker
2. Install your system components. Refer fo wiring guidelines for each component to build your system
3. Check connections and turn on power at the main breaker

Wire Exit Locations



Configurator

OmniDecor™ Decorative Light Panel Fixture

Part #	Dimensions	Color Temperature	Voltage	Wattage/ft
831901 – OmniDeco™	z – Horizontal (inch)	270 – 2700K	12 – 12V DC	2.4 – Low (2.4W)
	y – Vertical (inch)	300 – 3000K	24 – 24V DC	4.4 – Standard (4.4W)
		350 – 3500K		
		410 – 4100K		
		530 – 5300K		
		650 – 6500K		

Exit Location	Connectors	Mounting	3D Pattern	Frame Color
01 – Upper left corner (H)	1 – Black 5' with barrel plug	1 – Z-bars	B1 – Basic 1	1 – Black
02 – Upper left corner (V)	2 – White 5' with barrel plug	2 – EURO Hanger	B2 – Basic 2	2 – White
03 – Upper right corner (H)	3 – Black 10' with barrel plug		B3 – Basic 3	3 – Silver
04 – Upper right corner (V)	4 – White 10' with barrel plug		N1 – Nature Inspired 1	
05 – Lower left corner (H)	5 – Black 5' with bare leads		N2 – Nature Inspired 2	
06 – Upper left corner (H)	6 – White 5' with bare leads		N3 – Nature Inspired 3	
07 – Lower right corner (V)	7 – Black 10' with bare leads		M1 – Modern 1	
08 – Lower right corner (H)	8 – White 10' with bare leads		M2 – Modern 2	
09 – Along upper edge (H)			M3 – Modern 3	
10 – Along lower edge (H)			E1 – Elegant 1	
11 – Along left edge (V)			E2 – Elegant 2	
12 – Along right edge (V)			E3 – Elegant 3	
			00 – Custom	

* Reference Diagram on page 6

Orders can be placed by choosing all the options and configuration parameters, which generates an order code. Put your order code together by putting the codes from the above tables you would like to have in the same order from above into each cell below.

Part # Dimensions Color Temp. Voltage Wattage Exit Loc. Connector Mounting 3D Pattern Frame Color

Order Code Example

831901-11x24-1-2-350-12-2.4-02-2-1-1-B1-1

Breakdown: OmniDecor™ – sized 11" horizontal by 24" vertical – Single Face Illumination – LED located along 2 long edges – Color Temperature 3500K Static White – Voltage is 12V DC – Wattage is low 2.4W/ft – Exit location is at the upper left Vertical corner – Exit type is notched – Connector is 5' long, white cable with DC Jack – Mounted with Z-bars – Pattern Basic 1 – Black frame.

Accessories

Compatible Power Adaptors

Plug-in Power Drivers

Part Number	AC Input Range	DC Voltage	Rated Current	Rated Wattage
950003	100V AC ~ 240V AC	12V DC	5.0A	60W
950025-24-09	100V AC ~ 240V AC	24V DC	4.0A	96W
950033-24-036	100V AC ~ 240V AC	24V DC	1.5A	36W
950034-12-024	100V AC ~ 240V AC	12V DC	2.0A	24W
950035-24-096	100V AC ~ 240V AC	24V DC	4.0A	96W
950036-12-060	100V AC ~ 240V AC	12V DC	5.0A	60W
950036-24-060	100V AC ~ 240V AC	24V DC	2.5A	60W

Hardwire Power Drivers

Part Number	AC Input Range	DC Voltage	Rated Current	Rated Wattage
950037-12-060	100V AC ~ 277V AC	12V DC	5.0A	60W
950037-24-060	100V AC ~ 277V AC	24V DC	2.5A	60W
950038-24-096	100V AC ~ 277V AC	24V DC	4.0A	96W

5-in-1 Dimmable Power Drivers

Part Number	AC Input Range	DC Voltage	Rated Current	Rated Wattage
951003-12-060	100V AC ~ 277V AC	12V DC	5.0A	60W
951004-24-096	100V AC ~ 277V AC	24V DC	4.0A	96W
951006-24-192	100V AC ~ 277V AC	24V DC	2 x 4.0A	2 x 96W

Safety Disclaimer

Determine your system components, including a power adaptor, as well as optional dimmer and controller. Use only UL certified power adaptors with the power output that coordinates with your input voltage. Do not apply 24V DC to 12V DC panels, as within seconds the result may be burned LEDs or fire. Look for your voltage tags at the end of the power cord.

Accessories

Compatible Power Controllers

Rotary Style Dimming Controller

Part Number	DC Voltage	Channels	Dimming Range	Rated Wattage
970002	12V DC	N/A	PWM	96W / 192W

Inline Plug & Play Dimming Controller

Part Number	DC Voltage	Channels	Dimming Range	Rated Wattage
970014	12V / 24V DC	N/A	PWM	48W / 96W

Inline Dimming Controller with Remote

Part Number	DC Voltage	Channels	Dimming Range	Rated Wattage
970007	12V / 24V DC	N/A	PWM	72W / 144W

LED Dimming Controller Module

Part Number	DC Voltage	Channels	Dimming Range	Rated Wattage
970001	12V /24V DC	N/A	0V – 10V	60W / 96W

DMX Controller / Decoders

Part Number	DC Voltage	Channels	Dimming Control	Rated Wattage
970032	12V – 24V DC	4 CH	N/A	96-288W /Channel
970033	12V – 24V DC	5 CH	N/A	96-192W /Channel

Power Repeater

Part Number	DC Voltage	Channels	Dimming Control	Rated Wattage
970037	12 – 36V DC	4 CH	N/A	60 – 180W /Channel

Safety Disclaimer

Determine your system components, including a power adaptor, as well as optional dimmer and controller. Use only UL certified power adaptors with the power output that coordinates with your input voltage. Do not apply 24V DC to 12V DC panels, as within seconds the result may be burned LEDs or fire. Look for your voltage tags at the end of the power cord.